

Winnipeg Inner City Missions

Where We're Building a Better Tomorrow



WINTER 2023 HOLIDAY GUIDE

How you can help us help the inner-city

Our Team

Beverly Burkard

Executive Director

Cara Jones

Finance Coordinator

Jillian Mazur

Children's Program
Director

Phoenix Campbell

Children's Program
Facilitator

Inder Sawhney

Children's Program
Bus Driver

Mitch Sylvestre

Facilities Manager

Samantha Jeffers

Revenue & Program
Development Manager

Sandi Mitchell

Finance Manager



Winnipeg Inner City Missions is located on Treaty No. 1 Territory, the traditional lands of the Anishinaabe (Ojibway), Ininew (Cree), Oji-Cree, Dene, and Dakota, and is the Birthplace of the Métis Nation and Heart of the Métis Nation's Homeland.

Welcoming our New Board Members!

Winnipeg Inner City Missions is pleased to announce our new* volunteer board members! This group makes everything we do possible in tandem with your generous support.

Volunteer Board

Anthon Bouw

Interim Chair

***Kathy Johnson**

Treasurer

***Peo Peterson**

Secretary

***Darryl Reimer**

A Place of Hope
Resident Liaison

***Joye Platford**

Pastoral Care &
Therapeutic
Programming

***Darlene Overby**

Presbytery Liaison

Education & Wisdom

Terry Bruneau

AFC Liasson &
Special Projects

Elder Carol Moar

Indigenous Support
& Consultation

The holidays are fast approaching, and we need your support to ensure the community has the most enjoyable winter break ever!



Inflation and the pandemic have hit everyone hard. Unfortunately, a previous long-term donor for our **Flora House Holiday Party** has been unable to support us this year. We are very fortunate to have GAP (Graffiti Art Programming) supporting the program with a holiday visit to the Leaf at Assiniboine Park, but we still need gifts! Our goal is \$2,000. **\$100 from your donation will provide one of our kids with a much-needed new pair of shoes. \$200 will give a family a holiday hamper**, taking some financial burden off of a family who needs your support!



A Place of Hope residents need your help too!



At A Place of Hope we need your support for holiday hampers for our residents! Our goal is \$2,000. **\$100 of your donation will create a food hamper** for one of our twenty residents, ensuring full bellies and a happy holiday!

A Place of Hope

WHERE YOU'RE HOME



**Home
Suite
Home**

A PLACE OF HOPE



A PLACE OF HOPE

WHERE YOU'RE HOME

Apply today, be home tomorrow!

A Place of Hope is home to our Home Suite Home Program. A donation of **\$26** will provide housing for one night, **\$363** will provide two weeks, and **\$778** will provide one month of housing!

FLORA HOUSE

WHERE WE'RE ALL FRIENDS

Introducing the **Learn More, Play More Fund** in 2024! This fund will pay for extra curricular activities for our Flora House kids, such as soccer registration fees, guitar lessons, hockey equipment, and more. Your donation of **\$25** could pay for a child to attend Horse Therapy, and a donation over **\$250** could pay for soccer practice for a year. **Help our kids Do More this year!**

**Flora
House**

WHERE WE'RE ALL FRIENDS





FIRST STEPS PROGRAM

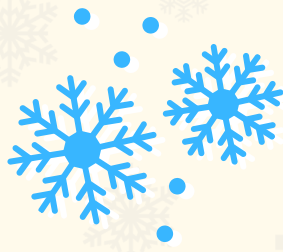
WHERE WE'RE GROWING TOGETHER

Growing your resume and your experience!

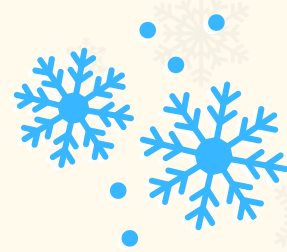
The Mentorship Program offers residents of A Place of Hope entry level job placements to help grow their resume and expand their experience. Your donation of **\$200** will provide one month of part-time wages and mentorship for a resident. A **\$3,000** donation will provide one month of half-time wages and mentorship!

The program provides on-the-job training, employment mentorship, and meaningful references for participants as they move on to permanent work outside of WICM. **Your donation will support people reach their goals!**





How to Help!



One-time donations provide much needed bumps in support

Monthly donations provide consistent support every month for our community

Donate on behalf of someone! Give the gift of charity this year and submit a donation in your loved one's name



AFC - COMMUNITY CENTRE
MOVING FORWARD, TOGETHER

With new supporting grants, we have been able to update our community kitchen plans at AFC to create a fully operational commercial training kitchen! But we *still* need your support to complete our community centre. A **\$100** donation could help with finishing our kitchen supplies. A **\$250** donation could help with finishing the paintwork. A **\$500** donation could help with furnishing our Grannies Room. All of these pieces will come together to make AFC a community centre accessible to our community, providing opportunity, culture, and comfort to anyone and everyone we can reach!

What's Happening

Projects at WICM are in full swing!



A PLACE OF HOPE



NEW: PRAIRIE EDUCATION CENTRE

This summer we were able to accomplish the design, build, and planting our Prairie Education Centre. This outdoor centre is home to the four Traditional Medicines, Indigenous plants and pollinators, four circular spaces for gathering, space for a sacred fire, and more.

SPECIAL THANKS

... to Lauren Roberts for taking such creative photographs of the urban landscape at our Every Child Matters event we hosted on September 30th!

Contact Us

PHONE

204-942-8682

FAX

204-957-5001

ADDRESS

415 Logan Ave
Winnipeg, MB,
R3A 0A4

WEBSITE

wicm.ca



Winnipeg Inner City Missions



Winnipeg Inner City Missions

@wpgwicm



*How You
Can Help!*



CANADAHELPS

DONATE ONLINE

Find WICM on CanadaHelps to set up regular or one-time donations

OR

Donate directly to WICM by sending an e-transfer to us at wicm@wicm.ca



DONATE BY MAIL

You can also mail a cheque directly to us, addressed to Winnipeg Inner City Missions, 415 Logan Ave, Winnipeg, MB, R3A 0A4

